



CEYLON ELECTRICITY BOARD

STATISTICAL DIGEST 2025



SUMMARY OF STATISTICS 2025

Page Ref.		Units	2024	2025	
1	Number of Power Stations	No.	377	*	417
1	Installed Capacity	MW	4,651	*	4,814
1 & 2	CEB Rooftop Solar PV	Total Connections	No.	73,050	108,979 (a)
		Total Capacity	MW	1,141	1,935 (a)
	Hydro Reservoir Capacity	GWh	1,279		1,279
	Hydro Reservoir Storage	GWh	1,060		1,128
1	Renewable Generation	GWh	8,982		10,726
		%	53.5		60.2
1	Maximum Demand	MW	2,673		2,896
1	Net Generation (with IPP)	GWh	16,802		17,812
8	Substations	No.	38,316		38,949
	Transmission and Distribution Losses	%	9.5		9.1
3	Energy Sold	GWh	15,191		16,069
5	Average Selling Price per Unit	LKR/kWh	36.01		26.27
	Average Cost per Unit at Selling Point	LKR/kWh	31.17	*	30.26 (a)
5	Revenue from Billed Sales	LKR million	547,010		422,205
4	Total Consumer Accounts	No.	7,100,733		7,184,272
7	Area Offices	No.	70		70
7	Consumer Service Centres (CSCs)	No.	246		246
4	Households Electrified During the Year	No.	53,233		53,736
	Rural Electrification Schemes Completed During the Year	No.	83		70
	System Load Factor (Calculated on Net Generation)	%	71.6		70.2
	Per Capita Electricity Consumption	kWh/Person	693		739
4 & 8	Retail Consumers per unit Length of LV Lines	No./km	46		46
	Total Employed on Permanent Basis	No.	22,135		21,508
	Capital Investments	LKR million	66,956		65,707 (a)
	Net Fixed Assets in Operation (Average)	LKR million	918,486	*	942,483 (a)
	Rate of Return on Fixed Assets	%	9.9	*	-2.7 (a)
	No. of Consumers per Employee	Nos./Employee	321		334
	Electricity Demand Elasticity (w.r.t. GDP)		1.38	*	1.17
	Total Energy Consumption in Sri Lanka (e)	kTOE	8,533.7	*	
	Per Capita Energy Consumption in Sri Lanka (e)	kgOE/Person	389.4	*	
	Share of Electricity in Total Energy Supply (e)	%	11.7	*	

IPP: Independent Power Producers
(e): Source :- Sustainable Energy Authority

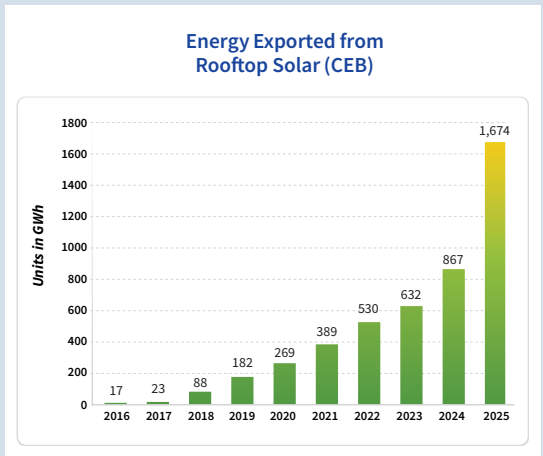
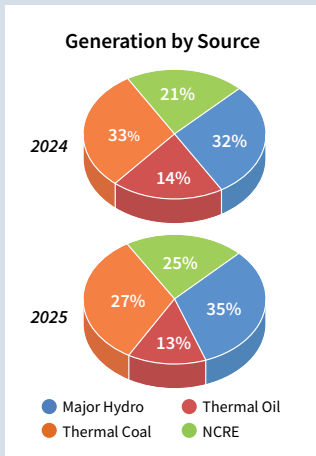
Note :- (a) : Provisional
* Restated

GENERATION STATISTICS

Ownership & Type of Power Station		No. of Power Stations			Installed Capacity (MW)		
		2024 (Restated)	2025	% Change	2024 (Restated)	2025	% Change
CEB :	Total	29	28	-3.4%	3,338	3,261	-2.3%
	Major Hydro	19	19	-	1,533	1,530	-0.2%
	Thermal (Oil)	8	7	-12.5%	801	727	-9.2%
	Thermal (Coal)	1	1	-	900	900	-
	NCRE (Wind)	1	1	-	104	104	-
IPP :	Total	348	389	11.8%	1,313	1,554	18.3%
	Thermal (Oil)	2	2	-	482	582	20.7%
	NCRE (Mini Hydro)	217	221	1.8%	432	437	1.2%
	NCRE (Wind)	19	19	-	163	163	-
	NCRE (Other)	15	16	6.7%	63	64	2.2%
	NCRE (Grid Connected Solar)	95	131	37.9%	173	307	77.4%
Total		377	417	10.6%	4,651	4,814	3.5%

Ownership & Source		Net Generation (GWh)			% of Total	
		2024	2025	% Change	2024	2025
CEB :	Total	12,861	12,968	0.8%	76.5%	72.8%
	Major Hydro	5,426	6,306	16.2%	32.3%	35.4%
	Thermal (Oil)	1,568	1,415	-9.7%	9.3%	7.9%
	Thermal (Coal)	5,482	4,870	-11.2%	32.6%	27.3%
	NCRE (Wind)	383	373	-2.5%	2.3%	2.1%
	Small Islands	2.8	3.0	4.6%	0.02%	0.02%
IPP :	Total	3,940	4,845	23.0%	23.5%	27.2%
	Thermal (Oil)	768	798	3.9%	4.6%	4.5%
	NCRE (Mini Hydro)	1,473	1,425	-3.3%	8.8%	8.0%
	NCRE (Wind)	409	401	-2.0%	2.4%	2.3%
	NCRE (Other)	167	203	21.5%	1.0%	1.1%
	NCRE (Grid Connected Solar)	257	343	33.8%	1.5%	1.9%
	NCRE(Rooftop Solar)	867	1,674	93.2%	5.2%	9.4%
Total Generation		16,802	17,812	6.0%		

Avg. Daily Generation - GWh/day	45.91	48.80	6.3%
Day Maximum Demand (MW)	2,459.7	2,826.1	
Night Maximum Demand (MW)	2,673.0	2,895.9	
Night Maximum Demand Recorded on	2024-09-26	2025-10-30	



Note:-

1. NCRE -Non Conventional Renewable Energy
2. NCRE (Other)- Dendro, Biomass & Municipal Solid Waste

ROOFTOP SOLAR PV DETAILS OF THE CEB NET WORK

Solar Scheme	Energy exported in GWh		% change	Total Consumer accounts (Nos)		% change
	2024	2025		2024	2025	
Net Metering	87	115	32%	11,449	14,453	26%
Net Accounting	419	702	68%	52,598	72,088	37%
Net Plus	260	233	-11%	2,768	3,589	30%
Net Plus Plus	101	624	517%	6,235	18,849	202%
Total	867	1,674	93%	73,050	108,979	49%

FUEL COST

Fuel Cost in LKR million					
Name of Power Station	Type of Fuel	2024	2024	2025	2025
		LKR million	LKR/kWh	LKR million	LKR/kWh
KPS (Small GT)	LAD	4,259	118.78	563	140.57
KPS (GT 7)	LAD				
KCCP	LAD	28,804	52.18	27,635	40.32
	Naphtha				
KCCPS 2	LAD	7,208	80.35	2,059	98.29
SPPS (Diesel) A	LAD	22,235	43.13	17,783	41.37
	HF				
SPPS (Diesel) B	LAD				
	HF				
Uthuru Janani PS	LAD	3,912	42.27	3,971	41.89
	FO				
Barge PS	LAD	13,594	41.34	9,069	40.62
	FO				
LVPP	LAD	108,845	17.96	87,945	16.26
	Coal				
Matugama	LAD	367	96.98	309	80.17
Dakunu Janani	LAD	661	104.89	502	82.04
TOTAL/AVERAGE		189,886	24.71	149,834	21.79

Note : Gross generation considered.

Source : CEB Finance Division

FUEL RATE AND THERMAL EFFICIENCY

	Fuel Rate in Litres or kg/kWh		Avg. Thermal Efficiency	
	2024	2025	2024	2025
KPS Small GT (LAD)	0.79	0.73	11.9%	12.8%
KPS GT 7 (LAD)	0.35	0.37	26.7%	25.4%
SPPS A (LAD)	0.37	0.85	25.4%	11.1%
SPPS A (HF)	0.24	0.23	39.3%	40.5%
SPPS B (LAD)	0.26	0.28	36.6%	33.8%
SPPS B (HF)	0.22	0.22	42.4%	42.4%
KCCP (LAD)	0.44	1.38	21.5%	6.8%
KCCP (Naphtha)	0.27	0.27	45.8%	45.5%
KCCPS 2 (LAD)	0.23	0.32	40.0%	29.1%
Uthuru Janani (FO)	0.22	0.22	42.4%	42.6%
Barge (FO)	0.22	0.22	41.0%	40.7%
LVPP (LAD)	0.43	0.72	22.3%	13.4%
LVPP (Coal)	0.37	0.37	38.0%	38.0%
Dakunu Janani (LAD)	0.29	0.28	33.7%	34.8%
Mathugama (LAD)	0.28	0.27	35.2%	36.0%

KCCP: Kelanithissa Combined Cycle

GT: Gas Turbines

KPS: Kelanitissa Power Station

LVPP: Lakvijaya Power Plant

SPPS: Sapugaskanda Power Station

FO: Furnace Oil

HF: Heavy Fuel

LAD: Lanka Auto Diesel

(Source : System Control Centre-Annual Report 2025)

ELECTRICITY SALES BY DISTRIBUTION DIVISIONS IN GWh

Distribution Provinces as per CEB Classification	Sales (GWh)		% Change	% of Total	Monthly Avg. Sales kWh/Cons.
	2024	2025	2024/25	2025	2025
Colombo City	1,586	1,690	6.5%	10.5%	728
North Western I	990	1,056	6.6%	6.6%	196
North Western II	627	672	7.1%	4.2%	111
North Central	645	689	6.7%	4.3%	113
Northern	512	552	7.9%	3.4%	107
Division 1 Total	4,360	4,658	6.8%	29.0%	186
Western North	2,414	2,525	4.6%	15.7%	292
Central I	717	757	5.5%	4.7%	125
Central II	676	724	7.1%	4.5%	100
Eastern	792	860	8.6%	5.3%	113
Division 2 Total	4,600	4,866	5.8%	30.3%	164
Western South II	1,653	1,750	5.9%	10.9%	297
Uva	395	423	7.3%	2.6%	80
Sabaragamuwa	575	616	7.2%	3.8%	98
Division 3 Total	2,622	2,790	6.4%	17.4%	159
Western South I	772	803	4.0%	5.0%	213
Southern I	659	704	6.9%	4.4%	127
Southern II	553	606	9.6%	3.8%	126
Division 4 Total	1,984	2,114	6.5%	13.2%	150
Bulk Supply to LECO	1,625	1,641	1.0%	10.2%	
TOTAL	15,191	16,069	5.8%	100%	

ELECTRICITY SALES BY TARIFF IN GWh

Tariff	Sales (GWh)		% Change	% of Total	Monthly Avg. Sales kWh/Cons.
	2024	2025	2024/25	2025	2025
Domestic	4,701	5,079	8.0%	31.6%	69
Religious	75	74	-2.2%	0.5%	137
General Purpose Total	3,472	3,744	7.8%	23.3%	343
GP 1 Small	1,872	2,051	9.6%	12.8%	189
GP 2 Medium	1,110	1,151	3.7%	7.2%	14,557
GP 3 Large	490	541	10.6%	3.4%	207,876
Hotel Total	355	425	19.7%	2.6%	36,428
H 1 Small	5	8	52.7%	0.05%	1,292
H 2 Medium	218	224	2.8%	1.4%	40,522
H 3 Large	132	194	46.2%	1.2%	645,556
Industrial Total	4,622	4,750	2.8%	29.6%	5,420
IP 1 Small	341	339	-0.7%	2.1%	424
IP 2 Medium	2,166	2,216	2.3%	13.8%	30,407
IP 3 Large	2,115	2,195	3.8%	13.7%	481,405
Government Total	241	271	12.5%	1.7%	2,439
GV 1 Small	13	27	112.3%	0.2%	259
GV 2 Medium	205	215	5.1%	1.3%	36,066
GV 3 Large	23	29	23.4%	0.18%	339,705
Agriculture	4	3	-4.2%	0.02%	61
Bulk Supply to LECO	1,625	1,641	1.0%	10.2%	-
Street Lighting(Estimate)	96	82	-14.1%	0.5%	-
TOTAL	15,191	16,069	5.8%	100.0%	

NUMBER OF CONSUMER ACCOUNTS BY PROVINCE

Distribution Provinces as per CEB Classification	Consumer Accounts		Increase in Accounts	% of Total
	2024	2025	2024/25	2025
Colombo City	192,395	193,468	1,073	2.7%
North Western I	444,107	449,971	5,864	6.3%
North Western II	499,330	504,948	5,618	7.0%
North Central	499,043	506,608	7,565	7.1%
Northern	421,391	429,312	7,921	6.0%
Division 1 Total	2,056,266	2,084,307	28,041	29.0%
Western North	713,363	720,807	7,444	10.0%
Central I	500,048	506,079	6,031	7.0%
Central II	601,569	605,850	4,281	8.4%
Eastern	623,285	632,371	9,086	8.8%
Division 2 Total	2,438,265	2,465,107	26,842	34.3%
Western South II	484,497	490,615	6,118	6.8%
Uva	437,044	443,454	6,410	6.2%
Sabaragamuwa	522,914	526,007	3,093	7.3%
Division 3 Total	1,444,455	1,460,076	15,621	20.3%
Western South I	311,562	314,663	3,101	4.4%
Southern I	455,249	460,317	5,068	6.4%
Southern II	394,934	399,800	4,866	5.6%
Division 4 Total	1,161,745	1,174,780	13,035	16.4%
Bulk Supply to LECO	1	1	-	*
Street Lighting	1	1	-	*
TOTAL	7,100,733	7,184,272	83,539	100.0%

NUMBER OF CONSUMER ACCOUNTS BY TARIFF

Tariff	Consumer Accounts		Increase in Accounts	% of Total
	2024	2025	2025	2025
Domestic	6,088,865	6,142,601	53,736	85.5%
Religious	44,302	44,777	475	0.6%
General Purpose Total	881,174	908,991	27,817	12.7%
GP 1 Small	874,677	902,183	27,506	12.6%
GP 2 Medium	6,302	6,591	289	0.1%
GP 3 Large	195	217	22	*
Hotel Total	791	972	181	0.01%
H 1 Small	350	487	137	*
H 2 Medium	419	460	41	*
H 3 Large	22	25	3	*
Industrial Total	72,158	73,039	881	1.0%
IP 1 Small	65,871	66,586	715	0.9%
IP 2 Medium	5,927	6,073	146	0.1%
IP 3 Large	360	380	20	*
Government Total	9,279	9,254	(25)	0.13%
GV 1 Small	8,785	8,750	(35)	0.12%
GV 2 Medium	487	497	10	*
GV 3 Large	7	7	-	*
Agriculture	4,162	4,636	474	0.06%
Bulk Supply to LECO	1	1	-	*
Street Lighting	1	1	-	*
TOTAL	7,100,733	7,184,272	83,539	100.0%

Note: * < 0.01%

REVENUE FROM ELECTRICITY SALES BY PROVINCE IN LKR million

Distribution Provinces as per CEB Classification	Revenue (LKR million)		% Change	% of Total	Avg. Price LKR/kWh
	2024	2025	2024/25	2025	2025
Colombo City	70,906	59,465	-16.1%	14.1%	35.18
North Western I	32,624	23,900	-26.7%	5.7%	22.63
North Western II	21,669	16,753	-22.7%	4.0%	24.95
North Central	22,037	17,018	-22.8%	4.0%	24.72
Northern	19,235	15,548	-19.2%	3.7%	28.17
Division 1 Total	166,471	132,684	-20.3%	31.4%	28.48
Western North	83,240	59,502	-28.5%	14.1%	23.56
Central I	25,595	19,525	-23.7%	4.6%	25.79
Central II	22,790	17,147	-24.8%	4.1%	23.68
Eastern	27,795	22,110	-20.5%	5.2%	25.72
Division 2 Total	159,420	118,285	-25.8%	28.0%	24.31
Western South II	60,256	44,865	-25.5%	10.6%	25.63
Uva	12,764	9,919	-22.3%	2.3%	23.44
Sabaragamuwa	19,297	14,576	-24.5%	3.5%	23.65
Division 3 Total	92,316	69,361	-24.9%	16.4%	24.86
Western South I	30,338	23,237	-23.4%	5.5%	28.92
Southern I	22,683	17,167	-24.3%	4.1%	24.38
Southern II	19,501	15,595	-20.0%	3.7%	25.74
Division 4 Total	72,522	55,999	-22.8%	13.3%	26.49
Bulk Supply to LECO	56,281	45,877	-18.5%	10.9%	27.95
TOTAL	547,010	422,205	-22.8%	100.0%	26.27

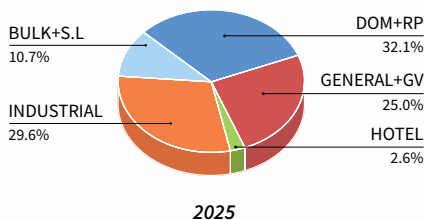
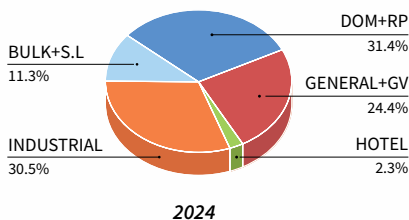
REVENUE FROM ELECTRICITY SALES BY TARIFF IN LKR million

Tariff	Revenue (LKR million)		% Change	% of Total	Avg. Price LKR/kWh
	2024	2025	2024/25	2025	2025
Domestic	160,499	122,615	-23.6%	29.0%	24.14
Religious	2,283	1,413	-38.1%	0.3%	19.21
General Purpose Total	163,087	141,884	-13.0%	33.6%	37.90
GP 1 Small	84,035	70,965	-15.6%	16.8%	34.60
GP 2 Medium	55,717	49,003	-12.1%	11.6%	42.56
GP 3 Large	23,334	21,916	-6.1%	5.2%	40.49
Hotel Total	10,975	8,130	-25.9%	1.9%	19.13
H 1 Small	100	142	41.8%	0.03%	18.86
H 2 Medium	6,959	4,498	-35.4%	1.1%	20.11
H 3 Large	3,916	3,489	-10.9%	0.8%	18.02
Industrial Total	142,306	91,462	-35.7%	21.7%	19.25
IP 1 Small	7,235	5,208	-28.0%	1.2%	15.37
IP 2 Medium	72,040	46,891	-34.9%	11.1%	21.16
IP 3 Large	63,031	39,362	-37.6%	9.3%	17.93
Government Total	11,421	10,738	-6.0%	2.5%	39.65
GV 1 Small	563	904	60.6%	0.2%	33.22
GV 2 Medium	9,783	8,853	-9.5%	2.1%	41.16
GV 3 Large	1,075	981	-8.7%	0.23%	34.40
Agriculture	149	83	-43.9%	0.02%	24.76
Bulk Supply to LECO	56,281	45,877	-18.5%	10.9%	27.95
Street Lighting	10	1	-87.1%	*	0.01
TOTAL	547,010	422,205	-22.8%	100.0%	26.27

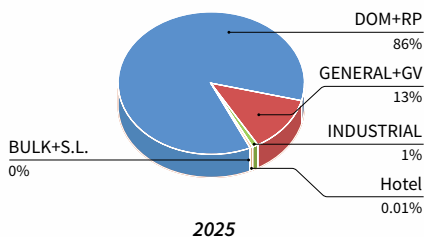
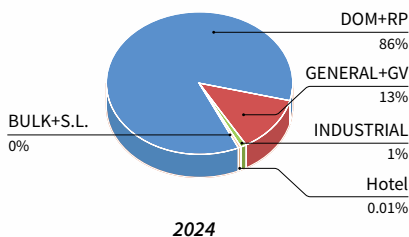
*Note: * < 0.01%

CEB ELECTRICITY SALES & CONSUMER ACCOUNTS BY TARIFF

CEB Electricity Sales by Tariff



CEB Consumer Accounts by Tariff



LECO ELECTRICITY SALES & CONSUMER ACCOUNTS BY TARIFF

	SALES BY TARIFF IN GWh			CONSUMER ACCOUNTS BY TARIFF		
	2024	2025	% Change	2024	2025	% Change
Domestic	688.9	743.0	7.9%	517,123	521,532	0.9%
Religious	9.7	10.2	5.2%	2,752	2,804	1.9%
General Purpose Total	624.2	667.1	6.9%	104,859	107,658	2.7%
GP 1 Small	371.9	405.4	9.0%	103,285	106,074	2.7%
GP 2 Medium	238.0	245.9	3.3%	1,564	1,573	0.6%
GP 3 Large	14.3	15.9	11.0%	10	11	10.0%
Hotel Total	69.2	71.1	2.7%	102	134	31.4%
H 1 Small	0.11	0.52	356.1%	21	46	119.0%
H 2 Medium	59.1	60.1	1.7%	78	85	9.0%
H 3 Large	10.0	10.4	4.4%	3	3	-
Industrial Total	291.4	304.0	4.3%	3,541	3,566	0.7%
IP 1 Small	32.0	33.5	4.6%	2,891	2,891	-
IP 2 Medium	217.2	229.0	5.4%	634	659	3.9%
IP 3 Large	42.2	41.4	-1.7%	16	16	-
Government Total	18.7	20.7	11.1%	420	420	-
GV 1 Small	1.8	2.0	7.0%	375	376	0.3%
GV 2 Medium	16.8	18.7	11.5%	45	44	-2.2%
GV 3 Large	-	-	-	-	-	-
Agriculture	-	-	-	-	-	-
Temporary Connections	0.2	0.2	3.4%	63	59	-6.3%
Street Lighting	25.1	24.0	-4.4%	2,062	2,028	-1.6%
TOTAL	1,727.4	1,840.3	6.5%	630,922	638,201	1.2%

(Source : Lanka Electricity Company)

GENERAL STATISTICS

	Units	2024 (Restated)	2025(a)	% Change
Population (Mid Year)	million	21.92	21.76	-0.7%
GNI at Current Prices	LKR million	29,311,030	32,142,196	9.7%
GNI at Constant (2015) Prices	LKR million	12,181,370	12,874,999	5.7%
GDP at Current Prices	LKR million	30,095,825	32,750,844	8.8%
GDP at Constant (2015) Prices	LKR million	12,508,954	13,128,577	5.0%
Per Capita GNI at Current Market Prices	LKR	1,337,426	1,477,395	10.5%
Per Capita GNI at Current Market Prices	US \$	4,427	4,909	10.9%
NCPI Index (2021= 100)	%	207	208	0.2%
GDP Deflator (2015 = 100)	%	241	250	3.7%
Area of Sri Lanka	sqkm	65,610	65,610	-
Average Exchange Rate	LKR/US \$	302.12	300.95	-0.4%

(a): Provisional

(Source:- Central Bank of Sri Lanka & Department of Census & Statistics)

NO. OF AREA OFFICES, CONSUMER SERVICE CENTRES (CSCs) & POINT OF SALES CENTRES (POS) IN CEB

Province / Division	2024			2025		
	Area	CSC	POS	Area	CSC	POS
Colombo City	4	8	8	4	8	8
North Western I	4	13	3	4	13	3
North Western II	4	14	4	4	14	4
North Central	3	12	2	3	12	2
Nothern	4	14	3	4	14	3
CEB Head Office			7			7
Division 1 Total	19	61	27	19	61	27
Western North	7	22	8	7	22	8
Central I	6	20	4	6	20	4
Central II	7	22	13	7	22	13
Eastern	5	27	4	5	27	4
Division 2 Total	25	91	29	25	91	29
Western South II	5	15	6	5	15	6
Uva	5	17	1	5	17	1
Sabaragamuwa	5	21	7	5	21	7
Division 3 Total	15	53	14	15	53	14
Western South I	4	11	10	4	11	10
Southern I	4	15	9	4	15	9
Southern II	3	15	9	3	15	9
Division 4 Total	11	41	28	11	41	28
TOTAL	70	246	98	70	246	98

**LENGTH OF OVERHEAD (OH) & UNDER GROUND (UG)
TRANSMISSION & DISTRIBUTION LINES (km)**

	2024	2025	% Change
220 kV Route OH	976	999	2.4%
220 kV Route UG	22	22	-
132 kV Route OH	2,350	2,350	-
132 kV Route UG	55	55	-
33 kV Route OH	36,383	36,438	0.2%
33 kV Route UG	55	52	-6.3%
11 kV Route OH	1,256	1,287	2.5%
11 kV Route UG	1,144	1,164	1.7%
Low Voltage Circuit OH & UG Total	152,711	156,491	2.5%
Single Phase OH & UG	26,654	30,232	13.4%
Two Phase OH & UG	1,596	1,340	-16.0%
Three Phase OH & UG	124,461	124,919	0.4%

DETAILS OF SUBSTATIONS

	Units	2024	2025	% Change
Grid SS (132/33 kV)	Nos.	63	63	-
	MVA	5,080	5,080	-
Grid SS (220/132/33 kV)	Nos.	4	4	-
	MVA	1600/380	1600/380	-
Grid SS (220/132 kV)	Nos.	9	10	11.1%
	MVA	4,010	4,510	12.5%
Grid SS (220/33 kV)	Nos.	6	6	-
	MVA	624	624	-
Grid SS (132/11 kV)	Nos.	9	9	-
	MVA	855	855	-
220 kV Switching	Nos.	0	1	-
	MVA	0	-	-
Primary SS (33 kV/11 kV)	Nos.	131	131	-
	MVA	1,368	1,410	3.1%
Distribution SS (33 kV or 11 kV / LV)	Nos.	38,094	38,726	1.7%
	MVA	8,819	9,124	3.5%
Total number of substations	Nos.	38,316	38,949	1.7%
Total capacity	MVA	22,735	23,582	3.7%

DISTRIBUTION LINE LENGTH BY PROVINCE & DIVISION

Province / Division	2024			2025		
	33 kV Route km	11 kV Route km	LV Circuit km	33 kV Route km	11 kV Route km	LV Circuit km
Colombo City	21	946	1,460	21	963	1,552
North Western I	2,154	314	11,268	2,174	317	12,610
North Western II	2,897	39	12,855	2,947	39	13,352
North Central	4,913	87	13,765	4,935	87	13,868
Nothern	2,558	331	10,474	2,637	341	10,751
Division 1 Total	12,544	1,717	49,823	12,714	1,747	52,132
Western North	2,271	76	10,857	2,296	76	10,944
Central I	2,347	153	9,443	2,422	154	9,237
Central II	2,936	9	8,977	2,905	9	9,562
Eastern	3,565	116	11,716	3,578	107	12,279
Division 2 Total	11,120	354	40,993	11,201	346	42,021
Western South II	1,385	19	7,240	1,419	19	6,539
Uva	3,214	0	12,884	3,164	0	13,229
Sabaragamuwa	3,481	18	14,227	3,332	18	14,596
Division 3 Total	8,080	37	34,351	7,915	37	34,365
Western South I	812	62	4,856	824	64	4,918
Southern I	1,886	124	10,997	1,838	151	11,210
Southern II	1,996	105	11,692	1,998	105	11,844
Division 4 Total	4,695	292	27,546	4,660	320	27,973
Total	36,439	2,400	152,711	36,490	2,451	156,491

ELECTRICITY TARIFF 2025

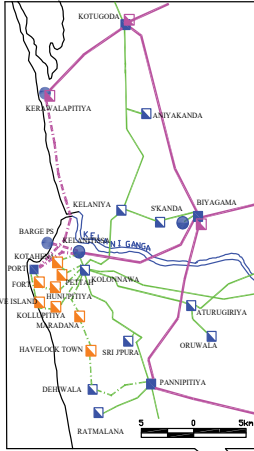
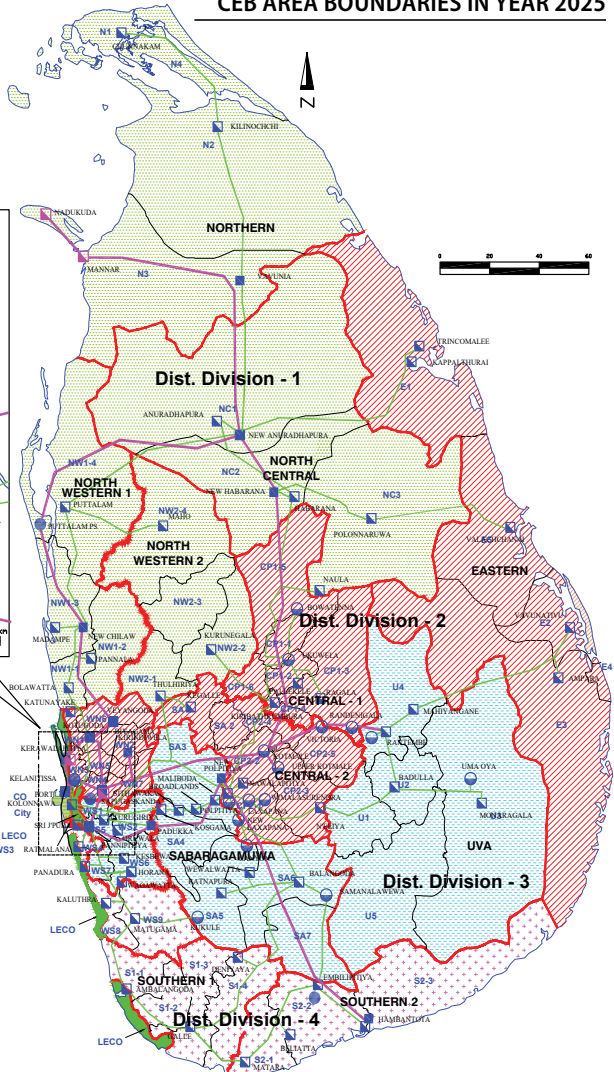
EFFECTIVE FROM (For each 30-day billing period)		2025-10-15				
CONSUMER CATEGORY		Energy Charge (LKR /kWh)			Fixed Charge (LKR /Month)	
DOMESTIC CATEGORY						
Consumption of 0 - 60 kWh per month						
Block 1 : 0 – 30 kWh		4.50			80.00	
Block 2 : 31 – 60 kWh		8.00			210.00	
Consumption above 60 kWh per month						
Block 1 : 0 – 60 kWh		12.75			N/A	
Block 2 : 61 – 90 kWh		18.50			400.00	
Block 3 : 91 – 120 kWh		24.00			1,000.00	
Block 4 : 121 – 180 kWh		41.00			1,500.00	
Block 5 : Above 180 kWh		61.00			2,100.00	
Time of Use Electricity Tariff for Domestic Consumers (Optional)						
Day Time (05:30 – 18:30)		35.00			2,100.00	
Peak Time (18:30 – 22:30)		67.00				
Off-Peak Time (22:30 – 05:30)		21.00				
RELIGIOUS & CHARITABLE INSTITUTIONS CATEGORY						
Block 1 : 0 – 30 kWh		4.50			75.00	
Block 2 : 31 – 90 kWh		4.50			200.00	
Block 3 : 91 – 120 kWh		8.00			350.00	
Block 4 : 121 – 180 kWh		19.00			1,300.00	
Block 5 : Above 180 kWh		26.00			1,700.00	
OTHER CONSUMER CATEGORIES		Energy Charge (LKR/kWh)			Fixed Charge	Demand Charge
		Day Time (05:30 – 18:30)	Peak Time (18:30 – 22:30)	Off-Peak Time (22:30 – 05:30)	(LKR / Month)	(LKR / kVA)
Industrial Rate 1	IP 1-1 For VDMC ≤ 300 kWh/month	8.00			300.00	-
	IP 1-2 For VDMC > 300 kWh/month	17.00			800.00	-
Industrial Rate 2		15.00	28.00	12.00	5,000.00	1,400.00
Industrial Rate 3		14.00	27.00	11.00	5,000.00	1,350.00
Hotel Rate 1	H 1-1 For VDMC ≤ 300 kWh/month	8.00			300.00	-
	H 1-2 For VDMC > 300 kWh/month	17.00			800.00	-
Hotel Rate 2		15.00	28.00	12.00	5,000.00	1,400.00
Hotel Rate 3		14.00	27.00	11.00	5,000.00	1,350.00
General Purpose Rate 1	GP 1-1 For VDMC ≤ 180 kWh/month	25.00			500.00	-
	GP 1-2 For VDMC > 180 kWh/month	34.00			1,600.00	-
General Purpose Rate 2		41.00	47.00	31.00	5,000.00	1,500.00
General Purpose Rate 3		39.50	46.00	30.00	5,000.00	1,450.00
Government Rate 1	GV 1-1 For VDMC ≤ 180 kWh/month	25.00			500.00	-
	GV 1-2 For VDMC > 180 kWh/month	34.00			1,600.00	-
Government Rate 2		41.00	47.00	31.00	5,000.00	1,500.00
Government Rate 3		39.50	46.00	30.00	5,000.00	1,450.00
STREET LIGHTING		50.00			-	-
EV CHARGING OF CEB CHARGING STATIONS						
DC Fast Charging		87.00	111.00	53.00	-	-
AC Level 2 Charging		70.00	90.00	40.00	-	-
AGRICULTURE Rate 1- Optional		13.00	23.00	7.00	750.00	-

*Note: VDMC – Volume Differentiated Monthly Consumption
Rate 1 – Supply at 400/230 V & Contract demand ≤ 42 kVA
Rate 2 – Supply at 400/230 V & Contract demand > 42 kVA
Rate 3 – Supply at 11 kV & above*



CEYLON ELECTRICITY BOARD

THE MAP OF SRI LANKA TRANSMISSION SYSTEM CEB DISTRIBUTION BOUNDARIES & CEB AREA BOUNDARIES IN YEAR 2025



DIVISION -01

- NORTHERN**
N1 Jaffna
N2 Kilinochchi
N3 Vavuniya
N4 Jaffna East
- NORTH CENTRAL**
NC1 Anuradhapura
NC2 Kekirawa
NC3 Minneriya
- NORTH WESTERN 1**
NW1-1 Wennappuwa
NW1-2 Kuliyaipitiya
NW1-3 Chilaw
NW1-4 Puttalam
- NORTH WESTERN 2**
NW2-1 Narammala
NW2-2 Kurunegala
NW2-3 Wariyapola
NW2-4 Maho
- COLOMBO CITY**
C0 Colombo North
Colombo South
Colombo East
Colombo West

DIVISION -02

- WESTERN NORTH**
WN1 Negombo
WN2 Veyangoda
WN3 Ja-Ela
WN4 Kelaniya
WN5 Gampaha
WN6 Diulapitiya
WN7 Kirindiwela
- CENTRAL PROVINCE I**
CP1-1 Matala
CP1-2 Katugastota
CP1-3 Kundsale
CP1-4 Kandy City
CP1-5 Dambulla
CP1-6 Galagedara
- CENTRAL PROVINCE II**
CP2-1 Ginigathena
CP2-2 Nawalapitiya
CP2-3 Nuwara Eliya
CP2-4 Peradeniya
CP2-5 Hagaranketha
- EASTERN**
E1 Trincomalee
E2 Batticaloa
E3 Ampara
E4 Kalmunai
E5 Valachchenai

DIVISION -03

- WESTERN SOUTH 2**
WS1 Sri Jipura
WS2 Awissawella
WS5 Homagama
WS6 Horana
WS7 Bandaragama
- SABARAGAMUWA**
SA3 Ruwanwella
SA4 Eheliyagoda
SA5 Ratnapura
SA6 Kahawatta
SA7 Embilipitiya
- UVA**
U1 Diyatalawa
U2 Badulla
U3 Monaragala
U4 Mahiyanganaya
U5 Wellawaya

DIVISION -04

- WESTERN SOUTH 1**
WS3 Dehiwala
WS4 Ratmalana
WS8 Kalutara
WS9 Mathugama
- SOUTHERN 1**
S1-1 Ambalangoda
S1-2 Baddegama
S1-3 Galle
S1-4 Akuressa
- SOUTHERN 2**
S2-1 Matura
S2-2 Tangalle
S2-3 Hambantota

LEGEND

- 220kV Line
- 220kV Underground Cable
- 132kV Underground Cable
- 132kV Line
- 220/132 kV Grid Substation
- 132/33 kV Grid Substation
- 220/33 kV Grid Substation
- 132/11 kV Grid Substation
- Hydro Power Station
- Thermal Power Station
- CEB Provincial Boundary
- CEB Area Boundary
- CEB Distribution Division 01
- CEB Distribution Division 02
- CEB Distribution Division 03
- CEB Distribution Division 04
- LECO

Planning & Development Branch
Distribution Division 01
01-01-2026