

Addendum No. 02

Amendments to the Bidding Documents

Power System Strengthening and Renewable Energy Integration Project – Package 1A: Constructions of Mirigama 220kV Switching Station, Mirigama 220/33kV Grid Substation and Peliyagoda 132/33 kV Grid Substation

**OCB No: CEB/AGM/PR/2024/OCB/PSSREIP-1A
(ADB Loan No. 4548-SRI)**

Amendment No. 01:

Remove the Requirement for Permanent Two -Story Building for Site office at Mirigama GS

Remove the requirement for Permanent Two -Story Building for Site office at Mirigama GS from part b of clause 1.3.1.1.12 Construction of Control & Other Building of Section 6- Employer's requirement, Part II – Requirements, Volume 04 of 08 (Page 6A-72).

Existing Clause

1.3.1.1.12 Construction of Control & Other Building

b) Site Office at Mirigama

- A permanent two-story building with an area of 450 sq. m in size with necessary facilities shall be provided. It shall consist of 4 nos. of rooms with attached bathrooms, living room, dining room, kitchen, care-takers and drivers' accommodations, store room, vehicle parking areas and necessary facilities including furniture.

- Until the completion of this permanent building, 02 Nos. of 20ft converted containers with required facilities for the purpose of site office shall be provided.

This temporary Site office shall be comprised with all the services such as Water, Electricity, Air conditioning, A4 size multifunction Printing, Scanning and Internet facilities to the satisfaction of the Employer's Personnel. It is to have opening windows fitted with sunblind. Minimum one number of separate toilets shall be provided. The office, toilet facilities and all services provided shall be maintained to the Employer's satisfaction until the completion of the permanent site office. The Contractor shall provide staff for cleaning, general duties and security purposes.

The Contractor shall provide four office tables, four office chairs, ten plastic chairs and two cupboards for office room and pantry as requested by the Employer.

c) Temporary Works (Stores, access, contractor's offices etc)

d) House for Diesel Generator and Sump tank

- 1 No. Diesel generator shall be covered with a permanent structure.

- 1 No. Sump room with water tank as per the drawings.

e) Guard room

f) Shed for car parking

The clause shall be amended as follows

1.3.1.1.12 Construction of Control & Other Building

b) Site Office at Mirigama

- 02 Nos. of 20ft converted containers with required facilities for the purpose of site office shall be provided.

This temporary Site office shall be comprised with all the services such as Water, Electricity, Air conditioning, A4 size multifunction Printing, Scanning and Internet facilities to the satisfaction of the Employer's Personnel. It is to have opening windows fitted with sunblind. Minimum one number of separate toilets shall be provided. The office, toilet facilities and all services provided shall be maintained to the Employer's. The Contractor shall provide staff for cleaning, general duties and security purposes. The Contractor shall provide four office tables, four office chairs, ten plastic chairs and two cupboards for office room and pantry as requested by the Employer.

c) Temporary Works (Stores, access, contractor's offices etc)

d) House for Diesel Generator and Sump tank

- 1 No. Diesel generator shall be covered with a permanent structure.

- 1 No. Sump room with water tank as per the drawings.

e) Guard room

f) Shed for car parking

Accordingly, Bidder shall not quote for the item "Permanent Building" of item 12 (1.3.1.1.12 construction of Control & other Buildings) under clause 1.3.1 Civil Works of Schedule No. 4: Civil Works, Installation, Other Service and Training of Schedule of Rates and Prices, Section 4- Bidding Forms in Volume 02 of 08. (Page 4A-37)

Amendment No. 02 :

Revise the requirements mentioned in sub clause (b) of clause 2.2.3.4.2 of Chapter 2 Switchgear, Part B-Technical Specification Section 6-Employer's requirement in Volume 05 of 08 (Page 92 of Chapter 2 Switchgear)

Existing clause:

Electric motor -operated mechanisms shall also be suitable for hand operation, independent of power supply. Facilities shall be provided for blocking electrical operation when the manual operation device is inserted.

All electric motors shall be AC operated. The motor running time for closing and opening shall not exceed 5 S.

For disconnectors and earth switches having three mechanisms (i.e one per phase) it shall be ensured that all three phases open or close whenever they are electrically operated either by remote or local means.

The clause shall be amended as follows

Electric motor -operated mechanisms shall also be suitable for hand operation, independent of power supply. Facilities shall be provided for blocking electrical operation when the manual operation device is inserted.

All electric motors shall be DC operated. The motor running time for closing and opening shall not exceed 5 S.

For disconnectors and earth switches having three mechanisms (i.e one per phase) it shall be ensured that all three phases open or close whenever they are electrically operated either by remote or local means.

Amendment No. 03:

Revised layout drawings for Peliyagoda Section 6-Employer's requirement, Part C- Drawings, Volume 06 of 08

In consideration of the formation level and access road elevation at the Peliyagoda Grid Substation, the following drawings have been revised. Accordingly,

1. The Proposed Layout for Peliyagoda Grid Substation (Dwg No. TD/CE/1/257/D/01/02, Rev 0) in Section 6-Employer's requirement, Part C- Drawings in Volume 06 of 08 shall be replaced with Dwg No. TD/CE/1/257/D/01/02, Rev 1 (**Annex 1**)
2. The Proposed Control Building for Peliyagoda Grid Substation (Dwg No. TD/CE/1/257/D/60/02-A) in Section 6-Employer's requirement, Part C- Drawings in Volume 06 of 08 shall be replaced with Dwg No. TD/CE/1/257/D/60/02-A, Rev 1 (**Annex 2**)
3. The Proposed Section Drawing for Control Building of Peliyagoda Grid Substation (Dwg No. TD/CE/1/257/D/60/02-B) in Section 6-Employer's requirement, Part C- Drawings in Volume 06 of 08 shall be replaced with Dwg No. TD/CE/1/257/D/60/02-B, Rev 1(**Annex 3**)

Amendment No. 04:

Including Technical Particulars and Guarantees (TPG) for Outdoor 36kV- Disconnectors and Earthing Switches, 36kV- Disconnecter Switch

Technical Particulars and Guarantees (TPG) for Outdoor 36kV- Disconnectors and Earthing Switches, 36kV- Disconnecter Switch have not been included in clause 2.5 36kV Outdoor Switchgear, Part D- Supplementary Information, Section 6- Employer's Requirements, Volume 07 of 08 although the requirements were included in the Scope of Works, Volume 04 of 08.

Please include Technical Particulars and Guarantees (TPG) for Outdoor 36kV- Disconnectors and Earthing Switches, 36kV- Disconnecter Switch which are attached as **Annex 4** to the Technical Particulars and Guarantees (TPG) of Volume 07 of 08.

Amendment No. 05 :Extension of the Bid Closing Date

Amendment 5.1

Section 2- Bid Data Sheets, D. Submission and Opening of Bids (page 2-5), Volume 1 of 8

The Clause no. ITB 24.1

The deadline for bid submission is :

Date: ***21st May, 2025***

Time : ***1000hrs***

shall be amended as;

The deadline for bid submission is :

Date: ***04th June, 2025***

Time : ***1000hrs***

Amendment 5.1

Section 2- Bid Data Sheets, D. Submission and Opening of Bids(page 2-5), Volume 1 of 8

The Clause no. ITB 27.1 : The bid opening of Technical Bids shall take place

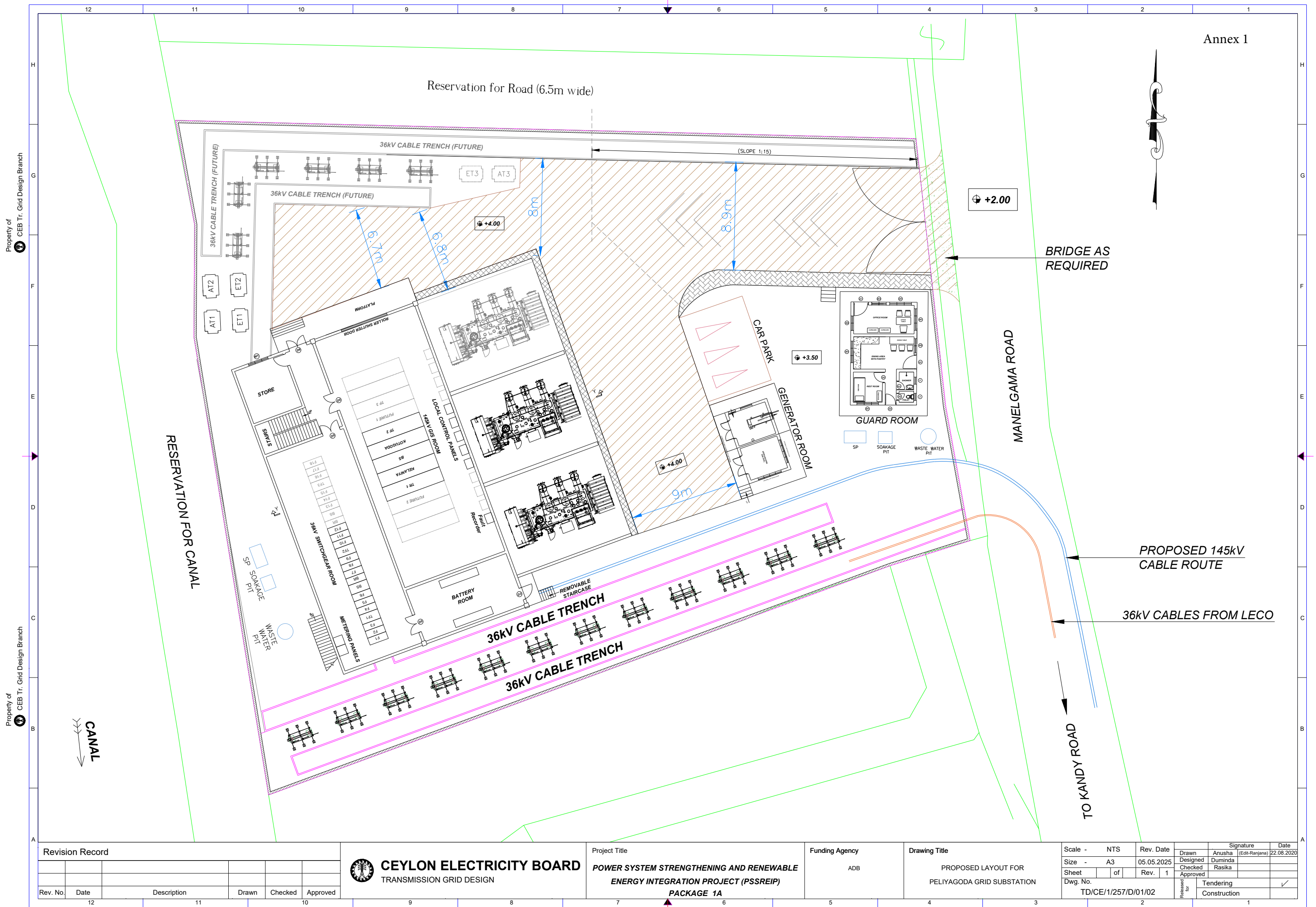
***Date:* 21st May , 2025**

***Time :* 1015hrs**

shall be amended as;

***Date:* 04th June, 2025**

***Time :* 1015hrs**



Annex 1

Property of
CEB Tr. Grid Design Branch

Property of
CEB Tr. Grid Design Branch

Revision Record					
Rev. No.	Date	Description	Drawn	Checked	Approved



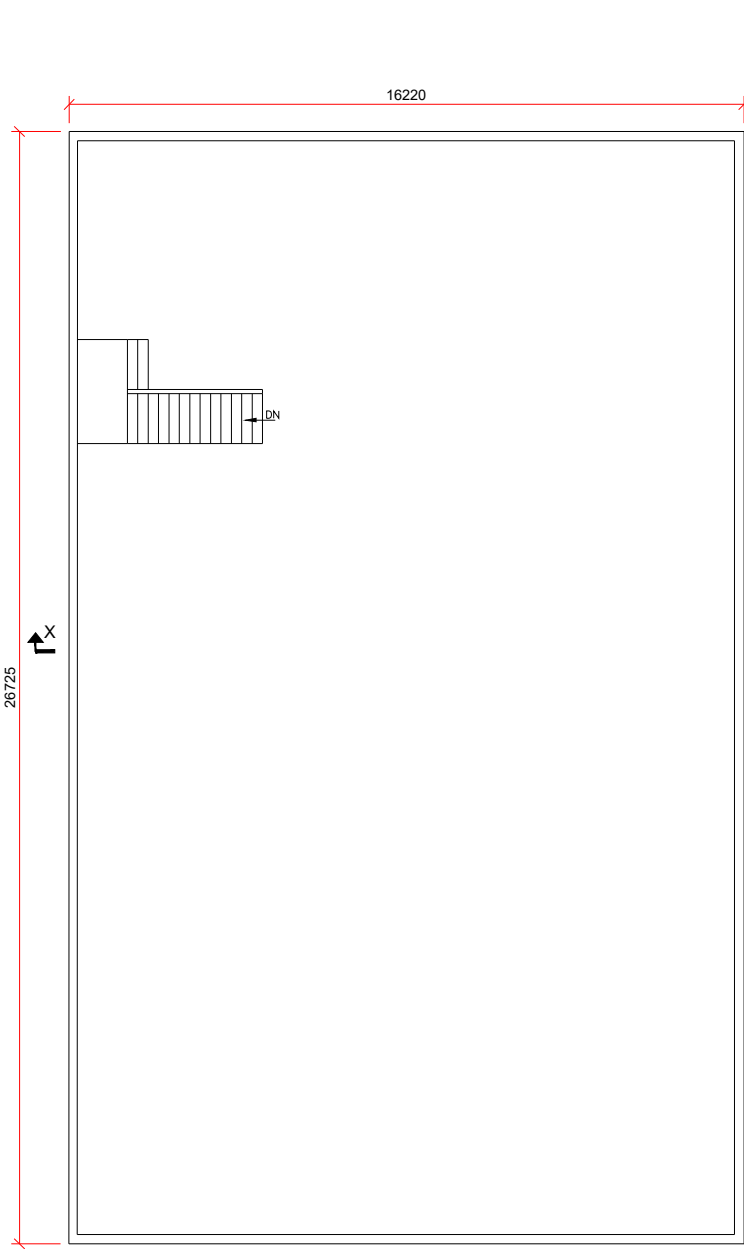
CEYLON ELECTRICITY BOARD
TRANSMISSION GRID DESIGN

Project Title
**POWER SYSTEM STRENGTHENING AND RENEWABLE
ENERGY INTEGRATION PROJECT (PSSREIP)
PACKAGE 1A**

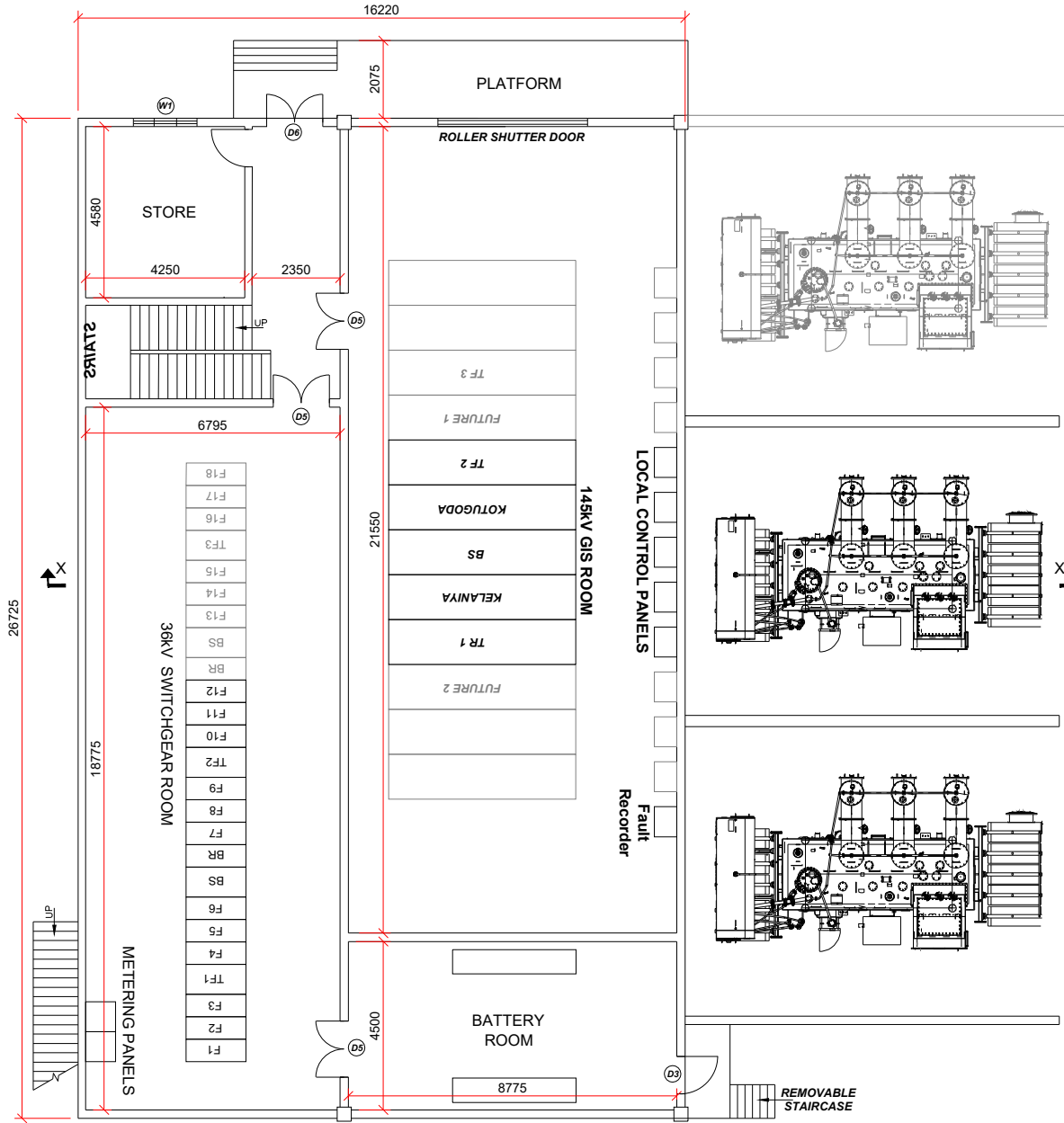
Funding Agency
ADB

Drawing Title
PROPOSED LAYOUT FOR
PELIYAGODA GRID SUBSTATION

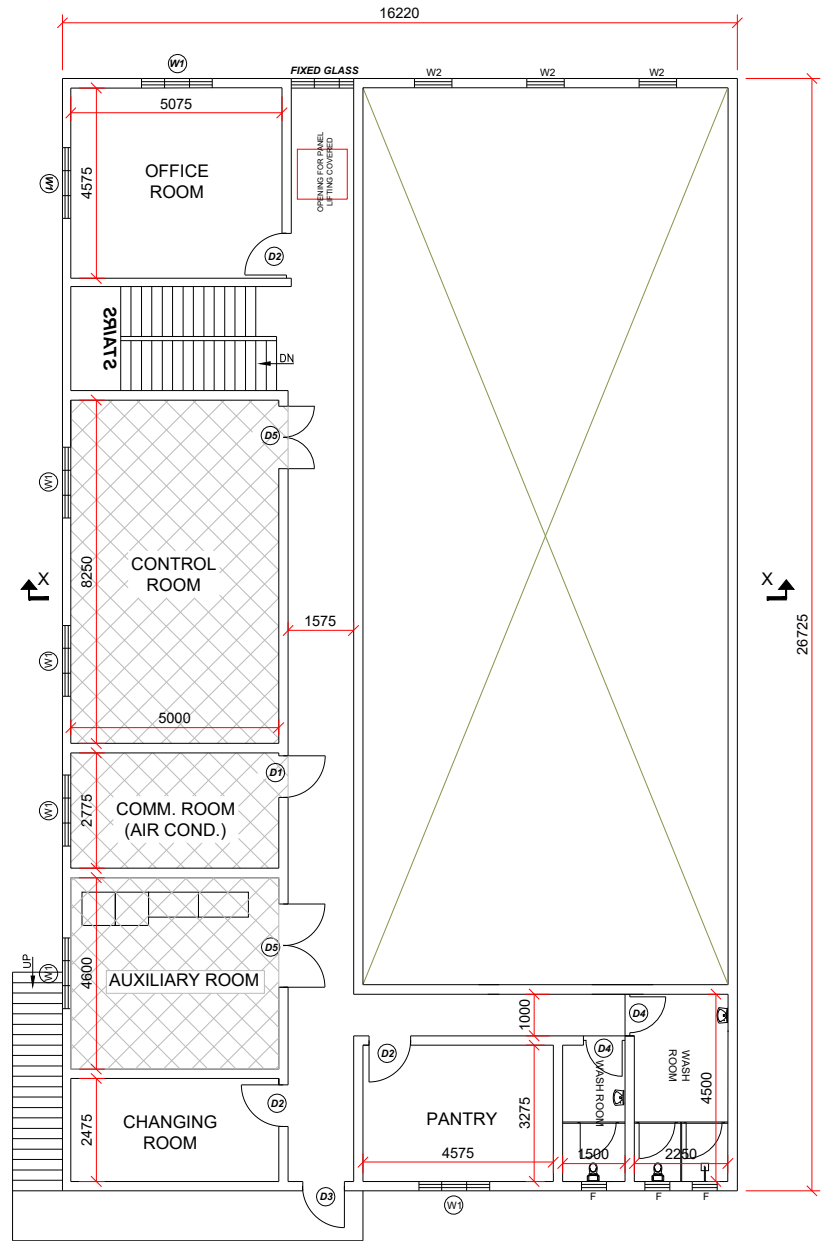
Scale - NTS	Rev. Date 05.05.2025	Drawn Anusha	Signature (Edit-Ranjana)	Date 22.08.2020
Size - A3	Sheet 1 of 1	Designed Duminda	Checked Rasika	
Dwg. No. TD/CE/1/257/D/01/02	Rev. 1	Approved	Released for Tendering	
			Construction	



BASEMENT



GROUND FLOOR



FIRST FLOOR

Rev. No.	Date	Description	Drawn	Checked	Approved



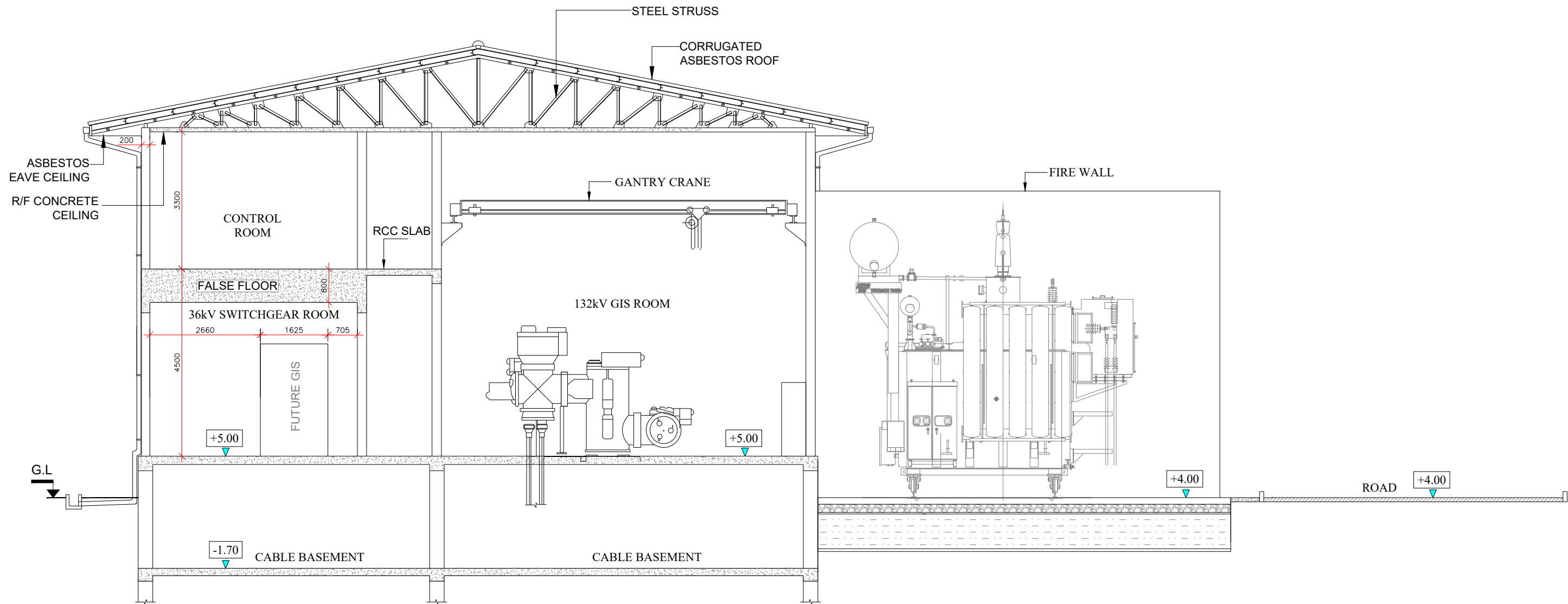
CEYLON ELECTRICITY BOARD
TRANSMISSION GRID DESIGN

Project Title
**POWER SYSTEM STRENGTHENING AND RENEWABLE
ENERGY INTEGRATION PROJECT (PSSREIP)**
PACKAGE 1A

Funding Agency
ADB

Drawing Title
PROPOSED CONTROL BUILDING FOR
PELIYAGODA GS

Scale - NTS	Rev. Date	Drawn	Signature	Date
Size - A3	05.05.2025	Designed	Ranjana	30.04.2025
Sheet of	Rev. 1	Checked	Duminda	
Dwg. No.		Approved	Rasika	
Released for		Tendering		
		Construction		



SECTION X-X

Revision Record					
Rev. No.	Date	Description	Drawn	Checked	Approved



CEYLON ELECTRICITY BOARD
TRANSMISSION GRID DESIGN

Project Title
**POWER SYSTEM STRENGTHENING AND RENEWABLE
ENERGY INTEGRATION PROJECT (PSSREIP)**
PACKAGE 1A

Funding Agency
ADB

Drawing Title
PROPOSED SECTION DRAWINGS FOR
CONTROL BUILDINGS OF PELIYAGODA GS

Scale - 1:100
Rev. Date 05.05.2025
Size - A3
Sheet of Rev. 1
Dwg. No. TD/CE/1/257/D/60/02 - B

Signature		Date
Drawn	Ranjana	30.04.2025
Designed	Duminda	
Checked	Rasika	
Approved		
Released for	Tendering	
	Construction	

2.2.2 Disconnectors and Earthing Switches (For Peliyagoda GS)

	Item	Units	Required	Tendered
			36 kV	36 kV
1.	Manufacturer's Name			
2.	Country of Manufacture			
3.	Place of Testing			
4.	Applicable Standard - IEC		IEC 62271-102	
5.	Manufacturer's type designation, and type ref or model number			
6.	Rated frequency	Hz	50	
7.	Rated voltage	kV	As per the Design	
8.	No. of poles per unit		3	
9.	Dimension and weight			
	(i) Overall height	mm		
	(ii) Total length	mm		
	(iii) Total width	mm		
	(iv) Total weight	kg		
10.	Type of contacts			
11.	Material of contact surface		Silver coated	
12.	Rated normal current	A	As per the Design	
13.	Maximum short time withstand current (1 sec)	rms kA	25	
14.	Air gap between poles of one phase	mm		
15.	Type of operating mechanism			
	- Disconnector		Motor	
	- Earthing Switch		Motor	
16.	Manual Operating facility	Yes/No	yes	

	Item	Units	Required	Tendered
			36 kV	36 kV
17.	Motor Voltage	V DC	110	
18.	Total weight of three-phase Isolator complete	kg		
19.	Charging current breaking capacity	A		
20.	Magnetizing current breaking capacity	A		
21.	Power consumption of the motor.	kW		
22.	Operating time			
23.	Lighting impulse withstand voltage			
	(i) to earth	kV	As per IEC 60071-1-2011 (max. value)	
	(ii) across isolating distance	kV		
24.	Rated one minute Power frequency withstand voltage			
	(i) to earth	kV	As per IEC 60071-1-2011	
	(ii) across isolating distance	kV		
	Type Tests <i>Document reference number and Type tested model shall be written in tendered column.</i>	Included in the Bid (Yes or No)		
25.	Test to prove satisfactory operation and mechanical endurance test			
26.	Test to prove the short-circuit making performance of earthing switches			
27.	Test to prove satisfactory operation at temperature limits			
28.	Test to prove the proper function of position indicating devices			
29.	Test to prove the bus-transfer current switching capability of disconnectors			
30.	Tests to prove the induced current-switching capability of earthing switches			
31.	Tests to prove the bus-charging current switching ability of disconnectors used in metal enclosed switchgear			

2.2.2 Disconnectors and Earthing Switches (For Mirigama GS)

	Item	Units	Required	Tendered
			36 kV	36 kV
1.	Manufacturer's Name			
2.	Country of Manufacture			
3.	Place of Testing			
4.	Applicable Standard - IEC		IEC 62271-102	
5.	Manufacturer's type designation, and type ref or model number			
6.	Rated frequency	Hz	50	
7.	Rated voltage	kV	As per the Design	
8.	No. of poles per unit		3	
9.	Dimension and weight			
	(i) Overall height	mm		
	(ii) Total length	mm		
	(iii) Total width	mm		
	(iv) Total weight	kg		
10.	Type of contacts			
11.	Material of contact surface		Silver coated	
12.	Rated normal current	A	As per the Design	
13.	Maximum short time withstand current (1 sec)	rms kA	25	
14.	Air gap between poles of one phase	mm		
15.	Type of operating mechanism			
	- Disconnector		Hand Operated	
	- Earthing Switch		N/A	
16.	Manual Operating facility	Yes/No	yes	

	Item	Units	Required	Tendered
			36 kV	36 kV
17.	Motor Voltage	V DC	220	
18.	Total weight of three-phase Isolator complete	kg		
19.	Charging current breaking capacity	A		
20.	Magnetizing current breaking capacity	A		
21.	Power consumption of the motor.	kW		
22.	Operating time			
23.	Lighting impulse withstand voltage			
	(i) to earth	kV	As per IEC 60071-1-2011 (max. value)	
	(ii) across isolating distance	kV		
24.	Rated one minute Power frequency withstand voltage			
	(i) to earth	kV	As per IEC 60071-1-2011	
	(ii) across isolating distance	kV		
	Type Tests <i>Document reference number and Type tested model shall be written in tendered column.</i>	Included in the Bid (Yes or No)		
25.	Test to prove satisfactory operation and mechanical endurance test			
26.	Test to prove the short-circuit making performance of earthing switches			
27.	Test to prove satisfactory operation at temperature limits			
28.	Test to prove the proper function of position indicating devices			
29.	Test to prove the bus-transfer current switching capability of disconnectors			
30.	Tests to prove the induced current-switching capability of earthing switches			
31.	Tests to prove the bus-charging current switching ability of disconnectors used in metal enclosed switchgear			